

**Rantoul Village Board of Trustees  
Regular Study Session  
October 2, 2007**

---

*Order of Business*

*Board Packet Page(s)*

---

**1. Call to Order – Mayor Williams**  
Roll Call

**2. Public Participation**

*Citizens wishing to address the Village Board with respect to any pending item of business listed upon the agenda or any matter not appearing on the agenda are asked to complete a public participation form and submit it to the Village Clerk prior to the meeting. Public comments will be limited to three minutes for each speaker.*

**3. Items from the Mayor**

A) Discussion Re: Zoning of Certain Properties on U.S. Rte. 136

**4. Items from Trustees**

**5. Items from the Clerk**

A) Presentation of any Addendum Items for the Agenda

**6. Presentation – I & I/Half Century of Progress Event**

Mr. Darius Harms, I & I Antique Tractor & Gas Engine Club

**7. Monthly Department Reports**

**8. Items from the Administrator**

A) Century Gateway Industrial Park Engineering/Design Project

1-2

**9. Items for the Consent Agenda**

*Items placed upon the Consent Agenda for the Regular Board Meeting are considered by the Board of Trustees to be routine and non-controversial in nature, and are to be enacted by a single motion and subsequent roll call vote.*

- A) Approval of Minutes, Regular Study Session, September 4, 2007
- B) Approval of Minutes, Regular Board Meeting, September 11, 2007
- C) Approval of Minutes, Special Board Meeting, September 27, 2007
- D) Approval of Minutes, Public Hearing, September 4, 2007
- E) Approval of Minutes, Public Hearing, September 11, 2007

**10. Items from the Comptroller**

- A) Network Migration 3-9
- B) Window Replacement – Municipal Building 10-12

**11. Items from the Police Department**

- A) Report on 800 Mhz radios & Metcad 13

**12. Items from Counsel**

**13. Adjournment**

**Next Meeting Date:  
Regular Monthly Meeting, October 9, 2007**

---

*The Rantoul Village Board of Trustees meets in Study Session on the first Tuesday of each month at 6:15pm and in Regular Session on the second Tuesday of each month at 6:15pm. Unless otherwise noted, all proceedings are held in the Louis B. Schelling Memorial Board Room of the Rantoul Municipal Building, 333 S. Tanner Street, Rantoul, Illinois.*

---

***Statement Regarding the Americans with Disabilities Act (ADA)***

*The Village of Rantoul wishes to ensure that its programs, services, and activities are accessible to individuals with disabilities. All Village Board meetings are wheelchair accessible. Persons with hearing difficulties may obtain auxiliary hearing aids available at each meeting upon request. Persons requiring additional assistance regarding accessibility issues should contact the Village Administrator's office at (217) 893-1661, x. 202. TTY users should call the Illinois Relay Center at 1-800-526-0844.*

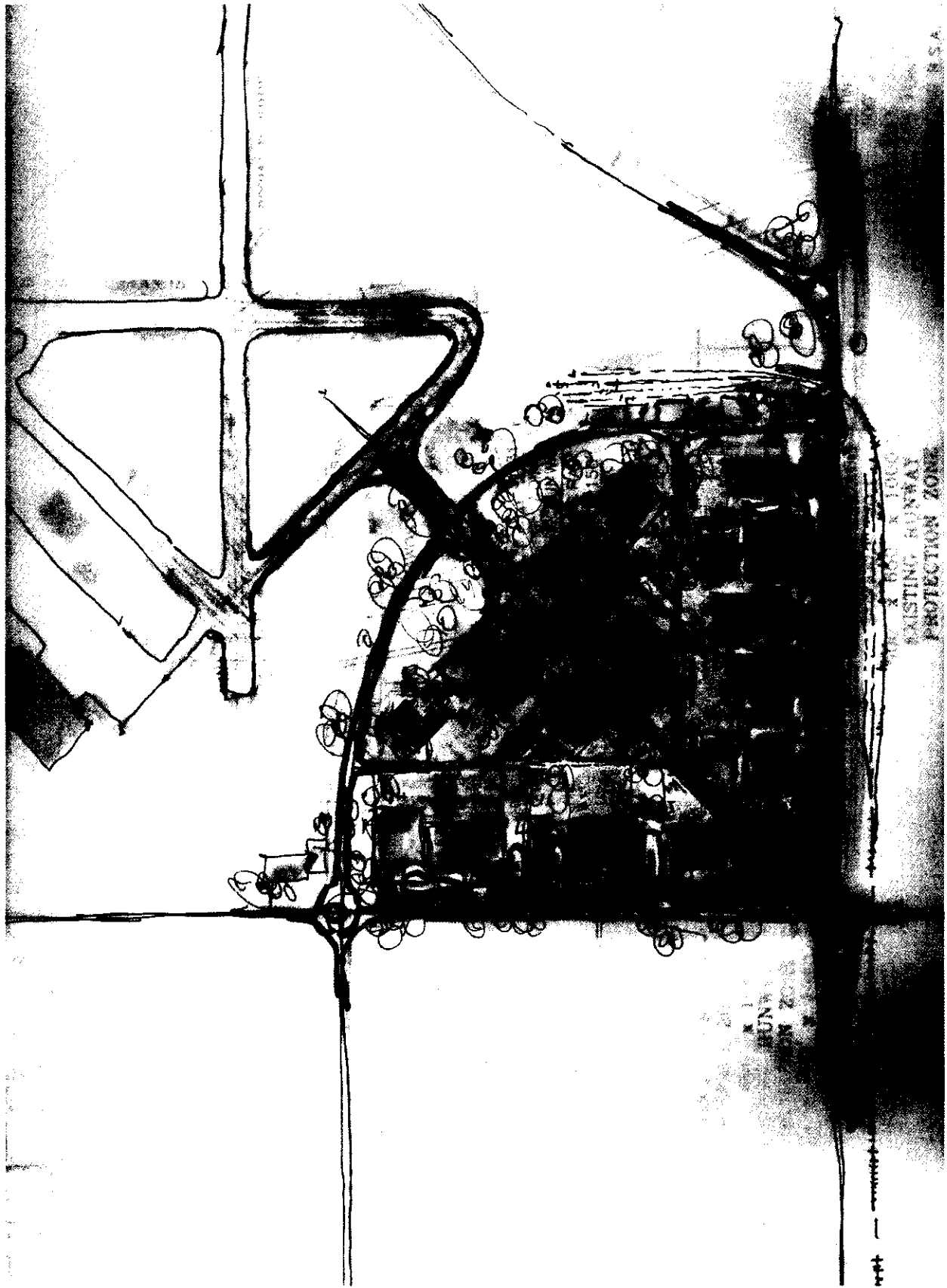
*Citizens may visit our website at [www.village.rantoul.il.us](http://www.village.rantoul.il.us) to view live and archived video of all Village Board meetings. Citizens may also download complete Board packets containing information on all ordinances, resolutions and departmental requests under consideration by the Village Board each month.*

**BOARD OF TRUSTEES  
VILLAGE OF RANTOUL**

**AGENDA ITEM**

**PAGE OF 1 Of 2**

<b>ITEM:</b> Resources to fund preliminary engineering of the Century Gateway Industrial Park	<b>DEPARTMENT:</b> Administrator's Office
<b>AGENDA SECTION:</b>	<b>AMOUNT:</b> NTE \$100,000
<b>ATTACHMENTS:</b> <input type="checkbox"/> <b>ORDINANCE</b> <input type="checkbox"/> <b>RESOLUTION</b> <input type="checkbox"/> <b>OTHER (See Summary Highlights)</b> <input checked="" type="checkbox"/> <b>SUPPORTING DOCUMENTS</b>	<b>DATE:</b> September 21, 2007
<b>SUMMARY HIGHLIGHTS:</b> In the Spring/Summer 2008 the Air Force intends to fill in the borrow pit south of Heritage Lake Park. It is seeking good free fill for this project. Initial discussions between the Chanute-Rantoul Redevelopment Commission staff and the Air Force involved an idea that the Commission design the drainage system to serve the area and the Air Force would use the fill from any detention/retention ponds from the drainage system plan. Having this initial work done on this property could make the property more attractive to a master developer because this work has been completed beforehand. This is a TIF eligible expense.	
<b>RECOMMENDED ACTION:</b> Authorize availability of NTE \$100,000 of TIF Funds to cover engineering costs to design the drainage system for the Century Gateway Industrial Park.	
<b>DEPARTMENT HEAD APPROVAL:</b>	<b>VILLAGE ADMINISTRATOR:</b>
<b>AGENDA PAGE NUMBER:</b>	



**BOARD OF TRUSTEES  
VILLAGE OF RANTOUL**

**AGENDA ITEM**

**PAGE 1 OF 1**

<b>ITEM: Network Migration</b>	<b>DEPARTMENT: IT (COMPTROLLER)</b>
<b>AGENDA SECTION:</b>	<b>AMOUNT: \$78,000 plus travel expenses</b>
<b>ATTACHMENTS:</b> <input type="checkbox"/> <b>ORDINANCE</b> <input type="checkbox"/> <b>RESOLUTION</b> <input checked="" type="checkbox"/> <b>OTHER (See Summary Highlights)</b> <input type="checkbox"/> <b>SUPPORTING DOCUMENTS</b>	<b>DATE: 10/02/2007</b>
<p><b>SUMMARY HIGHLIGHTS:</b></p> <p>A network migration is planned to move from a Novell network to a Microsoft network.</p> <ul style="list-style-type: none"> <li>• Current Novell directory is out-dated, insecure, and incompatible with several Village software applications.</li> <li>• Without the upgrade, the network hardware inventory will continue to grow, and user rights / server compatibility will become more complex.</li> <li>• Running a Microsoft network will allow us to consolidate our server hardware in half, saving 40-50k every 4 -5 yrs.</li> <li>• Licensing would be scaled down to one vendor, which would roll into our existing Volume Licensing Agreement with Microsoft and save the village approx. 5k / yr.</li> <li>• Less time would have to be spent upgrading servers (hardware and software), managing users, printers, and files.</li> <li>• The network architecture will be completely re-designed, allowing us to implement the latest in security and technology.</li> </ul> <p>In addition:</p> <ul style="list-style-type: none"> <li>• This project is a prerequisite to a Voice Over IP Phone system (VoIP). Our current Novell network is incompatible with a Cisco phone solution. The voice project is estimated to save another 3k / month.</li> <li>• The network migration is expected to take 4 – 6 months to complete. There will consist of 5 phases: Envision, Planning, Developing, Stabilizing, and Deploying.</li> <li>• The use of contracted professional services will reduce end user downtime and make the transition as seamless as possible. Current IT staff does not have the time or expertise to manage this project in house.</li> </ul>	

Benefits include:

- Reduced cost (licensing, hardware, software, administration)
- Increased user productivity
- Improved manageability and monitoring
- Increased server availability and reliability
- Enhanced security at the enterprise level
- Improved access for users onsite & remote
- Complete integration with existing Microsoft products

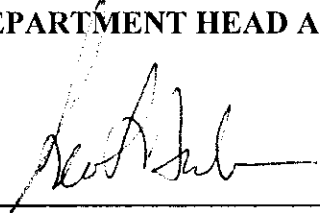
**RECOMMENDED ACTION:** Approve and sign a contract with Intrinsic Technologies of Lisle, Illinois.

After an RFQ, Intrinsic was selected as the most qualified and experienced vendor to assist with the migration. Migrating a network operating system is a very specialized project. Hiring professionals with expertise will ensure a reliable, secure, and successful project.

The consulting objectives will include:

- Design & implement a network architecture to meet current & future needs.
- Provide a highly available solution using Microsoft Clustering Services.
- Enhance security to the directory and messaging environment.
- Manage the migration of all accounts, mailboxes, printers, and files.
- Evaluate proven best practices and industry standards to leverage the network with current technologies.
- There are funds budgeted for this project in the IT budget.

**DEPARTMENT HEAD APPROVAL:**



**VILLAGE ADMINISTRATOR:**

## 1. Executive Summary

The Village of Rantoul has an Enterprise License Agreement with the Microsoft Corporation. In turn, the Village of Rantoul is working to get the most out of that software and licensing investment by leveraging the technology as appropriate for their business and technical requirements.

The Village of Rantoul discussed several business and technical drivers in support of this initiative. They are;

- Improved integration throughout the environment by leveraging the Microsoft technology stack where appropriate.
- Improved ability to effectively manage their IT infrastructure.
- Reduce the amount of OS version changes over the long term.
- Streamlined licensing and management of those licenses by leveraging one vendor.
- Costs of testing and implementing new releases of the Novell infrastructure components.
- Inability of Windows Client machines to take advantage of authentication in the current Novell Infrastructure.

This RFQ response includes details surrounding our methodology as well as the effort and staff required to migrate from Novell Netware 6.5 to Active Directory 2003 for directory services, file and printing as well as for DNS/DHCP. This response includes an estimates of time required to migrate the current Novell GroupWise v7 environment to Microsoft Exchange 2007. The proposal also assumes that Intrinsic will manage the project and perform the majority of the work with some assistance from the Village of Rantoul IT staff.

The technical scope for this project includes:

- Design & Implement an Active Directory Infrastructure that meets current and future requirements.
- Design & Implement a secure and cost-effective Microsoft Exchange 2007 messaging infrastructure to replace the existing GroupWise infrastructure.

Intrinsic is uniquely qualified as a Microsoft National Services Integrator Partner (NSI) and Premier Microsoft Gold Certified Partner in Advanced Infrastructure and Security to assist the Village of Rantoul to accomplish its goal to have a more centralized, standardized, optimized, and secure messaging and directory services infrastructure.

Intrinsic is looking forward to partnering with the Village of Rantoul in order to successfully migrate from Novell to Microsoft. We are available to answer any questions you may have regarding our proposal and encourage interaction between our teams to ensure project success. Intrinsic is in the midst of several Microsoft Exchange 2007 projects and feel strongly that we are one of the premier partners in this space.

## **10. General Representation of the Company**

### **10.1. Contacts**

**Intrinsic Technologies, LLC**  
1011 Warrenville Road, Suite 155  
Lisle, IL 60532

Scott Lake  
Business Development Manager

630-769-4151  
[swl@intrinsic.net](mailto:swl@intrinsic.net)

Jerry Smessaert  
Director of Consulting Services

630-769-4111 ext. 234  
[jes@intrinsic.net](mailto:jes@intrinsic.net)

Thomas Egan  
Practice Manager -  
Directory Services & Messaging

630-769-4111 ext. 259  
[tje@intrinsic.net](mailto:tje@intrinsic.net)

### **10.2. Organization**

#### **10.2.1. Background**

Intrinsic Technologies, L.L.C. is an information technology consulting firm that was founded in 1987 and is currently headquartered in Lisle, Illinois. Our client base and influence has grown from companies located predominantly in the greater Chicago area to national and multinational organizations throughout the world.

Intrinsic offers many services in Infrastructure Engineering, including application packaging software distribution; operating system design, build, and deployment; directory services design and implementation; messaging; and server management. We also provide network infrastructure support, such as network strategy and design, network management, and security.

Our strategy is to focus on project deliverables that are based on the drivers, directions, and constraints of our client's business. Intrinsic's senior management, account managers, on-site team leaders, and engineering staff are fully conversant in these precepts and dedicated to budgeted, on-time deliverables that are aligned with our clients' top-down visions and goals.

#### **Our many clients include the following:**

Abbott Laboratories

Ford Motor Company

Ace Hardware

Internal Revenue Service (IRS)

Albany International

Kellogg

Allstate Insurance

Kraft Foods/Phillip Morris

Altria

Kirkland & Ellis

Amgen

Meijer

Atlantic Health Systems	MVP Healthcare
Baxter Healthcare	Quest Diagnostics
Borg Warner	Qwest Communications
Cabell Huntington Hospital	PepsiAmericas
Cingular Wireless	Publix Super Markets, Inc.
CNA Insurance	SBC/AT&T
Cole Taylor Bank	State Farm Insurance
Crate & Barrel	United States Postal Service
Exelon	Veteran's Administration
Field Museum of Natural History	Washington Mutual
Federal Home Loan Bank	William Wrigley, Jr. Company

**10.2.2. Global Support**

Intrinsic services many large global enterprises, with both national and international offices. Our consultants travel domestically and internationally, as determined by our clients' needs and demands, to ensure that migration and support services are provided for all client sites.

**10.2.3. Strategic Alliance with Microsoft**



Advanced Infrastructure Solutions  
 Information Worker Solutions  
 Mobility Solutions  
 Network Infrastructure Solutions  
 Security Solutions

Intrinsic is a Microsoft National Services (NSI) partner and was named a Microsoft Gold Certified Partner for Enterprise Systems in 2001. We hold Gold Certifications in 5 major competencies:

- Advanced Infrastructure Solutions Competency
  - Exchange Migration and Deployment Specialization
  - Active Directory and Identity Management Specialization
  - Systems Management Specialization
- Information Worker Solutions Competency
  - Unified Communications Specialization
- Mobility Solutions
- Networking Infrastructure Solutions
- Security Solutions Competency
  - Infrastructure Security Specialization
  - Security Management Specialization

These competencies are earned by developing and delivering solutions for customers, augmented by formal certifications of Intrinsic personnel. This distinction recognizes Intrinsic's exceptional understanding and delivery of Microsoft-based solutions at the Enterprise level, and enables our clients to leverage this relationship and take advantage of advanced Microsoft training and technical support through Intrinsic.



Intrinsic Technologies is one of five Quest Software United States Elite partners and the only Elite partner located in the Central Region. Intrinsic specializes in their Infrastructure Management suite of products that includes Active Directory, Exchange, Windows, Migration, SharePoint, and Unix/Linux.

#### 10.2.4. Strategic Alliances for Global Deployments

Intrinsic has established relationships with several Global Systems Integrators, as well as National and International technical staffing firms in order to satisfy our customer's requirements in the United States, Canada and abroad.

#### 10.2.5. Global Support

Intrinsic services many large global enterprises, with both national and international offices. Our consultants travel both domestically and internationally, as determined by our clients' needs and demands, to ensure that migration and support services are provided for all client sites.

### 11. Summary

In summary, we appreciate the opportunity to respond to this Request for Qualification (RFQ) and believe that Intrinsic Technologies is uniquely qualified to support your Directory and Messaging migration project for the following reasons:

- Intrinsic Technologies has proven Global PMO (Project Management Office) expertise, formal project methodologies, templates, proprietary scripts & toolkits, and seasoned resources. These tools and competencies allow Intrinsic to increase the quality, efficiency, and success rate while reducing the timeframe, cost and risk associated with the migration process.
- Intrinsic Technologies has a 100% successful track record with the upgrade and migration to Microsoft Exchange 2007 within a large variety of operating environments.

Our focus and experience with Microsoft technologies and our status as a **Gold Certified Partner** in the areas of **Advanced Infrastructure** and **Security** translates to a direct and positive impact for the Village of Rantoul in several areas;

- Reduced overall cost of implementation.
- More rapid implementation timeframe.
- Substantially mitigates risk associated with the implementation process.
- Approach offers a standardized Microsoft Exchange infrastructure by hardening the environment, formalizing process and documentation through best practices, and simplifying the on-going support model.

We hope these factors establish Intrinsic Technologies as your partner of choice, as we have shown that we have in-depth client and product knowledge, strategic partnerships

with your selected vendors, a successful track record completing similar migrations, proven methodologies and structured process around project management, and the unrivaled expertise needed to ensure this project is a complete success.

## 11.1. References


Intrinsic's commitment to excellence is best assessed by speaking with our customer references. Previous migration project experiences have helped Intrinsic identify typical project pitfalls and mitigate the risk associated with them. Interestingly, these challenges are rarely technical in nature. Rather, they are most often driven by people and/or process issues. Clearly stated objectives, expectations and standardized status reporting (daily & weekly as required) help keep projects on track and on budget.

Please find the following reference accounts where Intrinsic Technologies has delivered similar engagements outlined in this proposal. When appropriate we would be happy to assist in coordinating reference calls with the appropriate contacts should the Village of Rantoul wish to speak with any of these accounts:

**BOARD OF TRUSTEES  
VILLAGE OF RANTOUL**

AGENDA ITEM

PAGE 1 OF 1

<b>ITEM: NEW WINDOWS</b>	<b>DEPARTMENT: ADMIN</b>
<b>AGENDA SECTION:</b>	<b>AMOUNT:</b>
<b>ATTACHMENTS:</b> <input type="checkbox"/> <b>ORDINANCE</b> <input type="checkbox"/> <b>RESOLUTION</b> <input checked="" type="checkbox"/> <b>OTHER (See Summary Highlights)</b> <input type="checkbox"/> <b>SUPPORTING DOCUMENTS</b>	<b>DATE: 9/20/07</b>
<p><b>SUMMARY HIGHLIGHTS:</b> The windows in the accounting office and conference room in the Municipal building have deteriorated over the years due to termite and water damage. These windows are original to the building and need to be replaced. We have obtained a price for the cost of the replacement windows directly from Jeld-Wen in the amount of \$10,206.48. This is a 40% discount off of the list price. We are also obtaining quotes from contractors to remove the old windows and install the new ones. Those quotes will be received within the next few days. The installation cost is expected to be less than \$10,000. We have budgeted \$25,850 for this project.</p>	
<p><b>RECOMMENDED ACTION:</b> Waive the bidding procedure for the purchase of the windows and authorize the purchase from Jeld-Wen in the amount of \$10,206.48. Also authorize the installation of the windows to the contractor with lowest responsible quote.</p>	
<b>DEPARTMENT HEAD APPROVAL:</b>  	<b>VILLAGE ADMINISTRATOR:</b>

28 Aug 07

QUOT. FOR REVIEW  
MATERIAL \$10,970.-

JELD-WEN Windows--Rantoul  
201 EVANS ROAD  
RANTOUL TOWNSHIP, IL 61866  
PHONE: (217) 893-4444  
FAX: (217) 893-7474

QUOTE QUOTE CW89361  
DATE 08/24/07  
PAGE 1  
ID dougst  
TERRITORY X

SOLD TO: 94067  
WINDOW OUTSIDE SALES  
201 EVANS DRIVE  
RANTOUL, IL 61866

SHIP TO: 94067  
Village of Rantoul  
333 S Tanner  
RANTOUL, IL 61866

ShipContact: Martin Ablinger 217.893.1661  
CUSTOMER PO EXPIRE DATE P/C TERMS  
89361 09/23/07 ppd ORDER MUST BE PRE-PAID BE

LINE ITEM DESCRIPTION QTY ORD LSTPRICE NETPRICE EXTEND NET

1 H61099 TCCP6072 1 936.67 562.00 562.00  
Tradition Plus Clad Fixed Casement/Awning Product, Frame  
Size = 60 X 72 , Chestnut Bronze Exterior, Natural Interior,  
No Drip Cap/Nail Fin, 4 9/16 Jamb, DP 35, Insulated Low-E  
Annealed Glass, Preserve Film, Argon Filled, [NFRC -  
U-fact:.00 SHGC:.00 VLT:.00]  
\* DISCOUNT 40.00 %

JEREMY

2 H61107 16 940.88 564.53 9032.48  
Tradition Plus Clad Awning, One Wide Two High Frame Size =  
48 X 72 , BTM= 24 Chestnut Bronze Exterior, Natural  
Interior, No Drip Cap/Nail Fin, 4 9/16 Jamb, Picture /  
Awning Chestnut Bronze Hardware, Folding Handle, 2 Locks, DP  
35, Insulated Glass, Low-E Annealed Glass, Preserve Film,  
Argon Filled, Fiberglass Mesh Chestnut Bronze Screen,  
Concealed/Stainless Hardware,  
\* DISCOUNT 40.00 %

8. ACCOUNTING  
8. CONFERENCE

A1  
H61105 TCA4848 16  
Tradition Plus Clad Awning, Frame Size = 48 X 48 ,  
Chestnut Bronze Exterior, Natural Interior, No Drip  
Cap/Nail Fin, Stationary, DP 35, Insulated Low-E  
Annealed Glass, Preserve Film, Argon Filled, [NFRC -  
U-fact:.33 SHGC:.29 VLT:.49] No-Fin = BT

B1  
H61106 TCA4824 16  
Tradition Plus Clad Awning, Frame Size = 48 X 24 ,  
Chestnut Bronze Exterior, Natural Interior, No Drip  
Cap/Nail Fin, Venting, Chestnut Bronze Hardware,  
Concealed/Stainless Hardware, Folding Handle, 2 Locks,  
DP 35, Insulated Low-E Annealed Glass, Preserve Film,  
Argon Filled, Fiberglass Mesh Chestnut Bronze Screen,  
[NFRC - U-fact:.33 SHGC:.29 VLT:.49] No-Fin = TP

*MOLL COVERS*

3 8260957	1	360.00	216.00	<u>216.00</u>
ALUM SHEETING CB .019X24X50'				
* DISCOUNT 40.00 %				

TOTAL QTY:	18			
	LIST TOTAL	16,350.75		
	SUB-TOTAL	9,810.48		
	FREIGHT CHARGE	396.00		
	County Sales Taxes	25.52		
	State Sales Taxes	637.91		

		<u>TOTAL IN USD</u>	<u>10,869.91</u>	<i>10,869.91</i>
CUBIC FEET:	345	WEIGHT:	1,753	EQUIVALENTS:
				3

**BOARD OF TRUSTEES  
VILLAGE OF RANTOUL**

**AGENDA ITEM**

**PAGE\_1\_\_OF\_1\_\_**

<b>ITEM: Radios</b>	<b>DEPARTMENT: Police</b>
<b>AGENDA SECTION:</b>	<b>AMOUNT:</b>
<b>ATTACHMENTS:</b> <input type="checkbox"/> <b>ORDINANCE</b> <input type="checkbox"/> <b>RESOLUTION</b> <input type="checkbox"/> <b>OTHER (See Summary Highlights)</b> <input type="checkbox"/> <b>SUPPORTING DOCUMENTS</b>	<b>DATE: September 21, 2007</b>
<b>SUMMARY HIGHLIGHTS:</b>  Report and discussion of 800 Mhz radios and Metcad.	
<b>RECOMMENDED ACTION:</b>	
<b>DEPARTMENT HEAD APPROVAL:</b>	<b>VILLAGE ADMINISTRATOR:</b>
<b>AGENDA PAGE NUMBER:</b>	